

# Communities, Leisure & Wellbeing 2024

# COMMUNITIES, LEISURE & WELLBEING

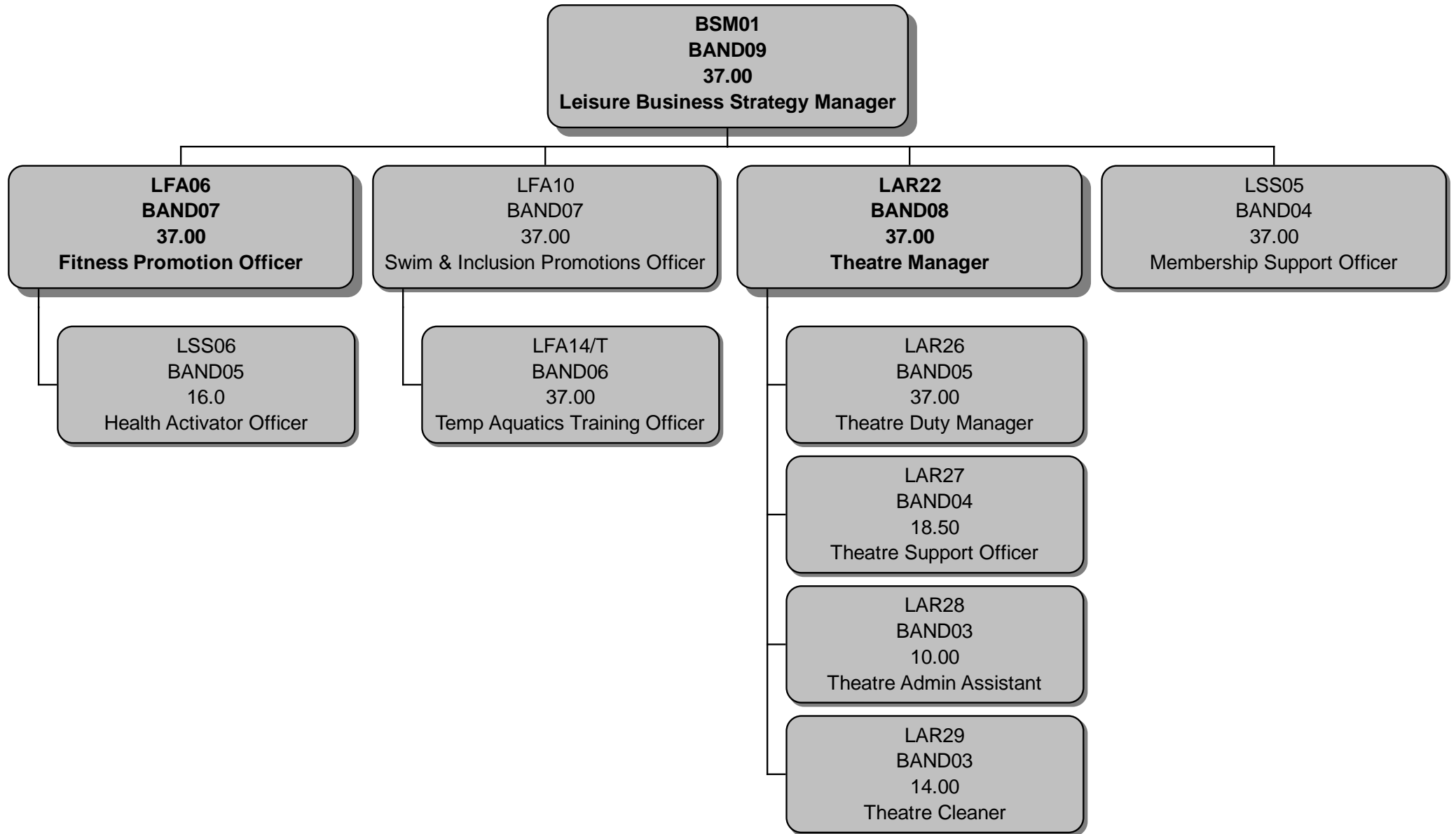
**ASDIR03**  
**SMANBAND3**  
**37.00**  
**Assistant Director - Communities, Leisure & Wellbeing**

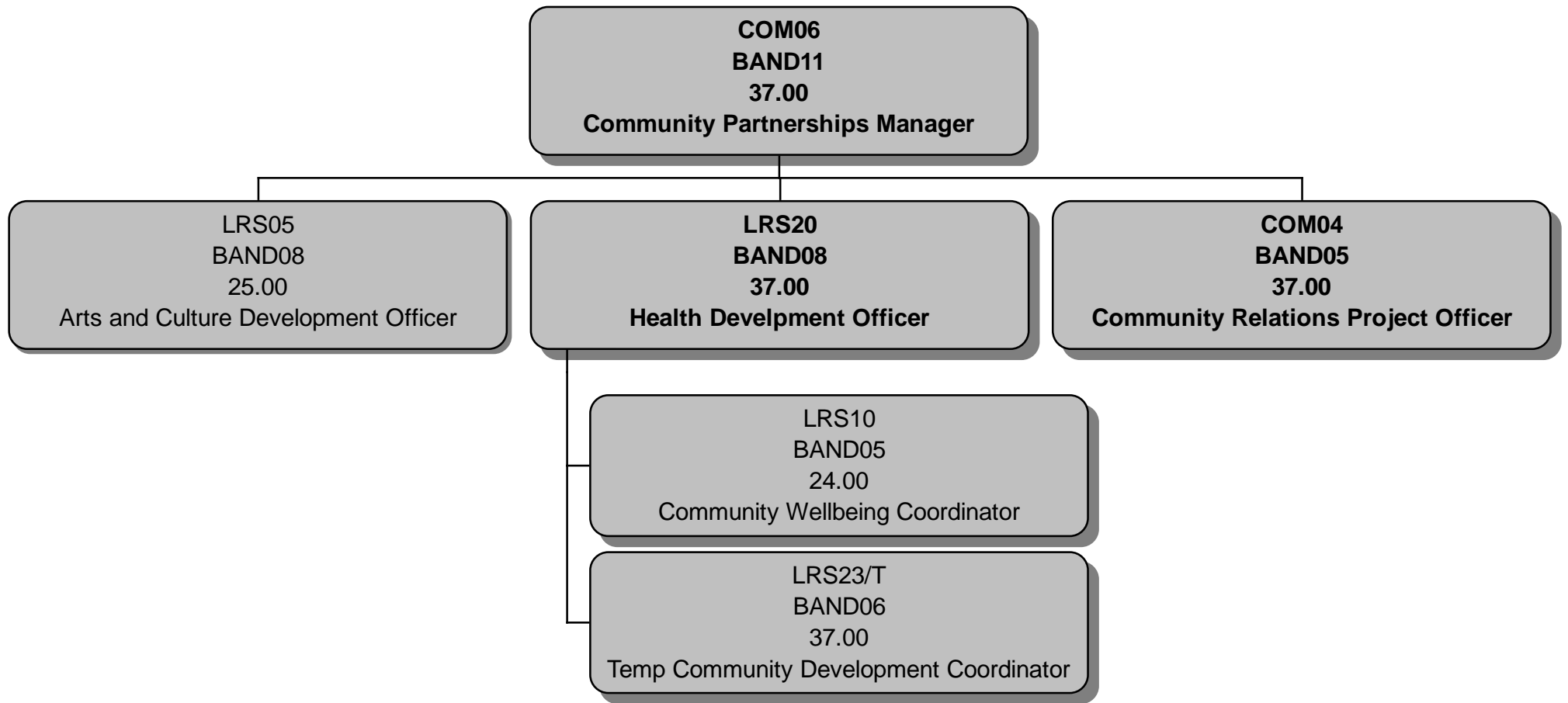
**BSM01**  
**BAND09**  
**37.00**  
**Leisure Business Strategy Manager**

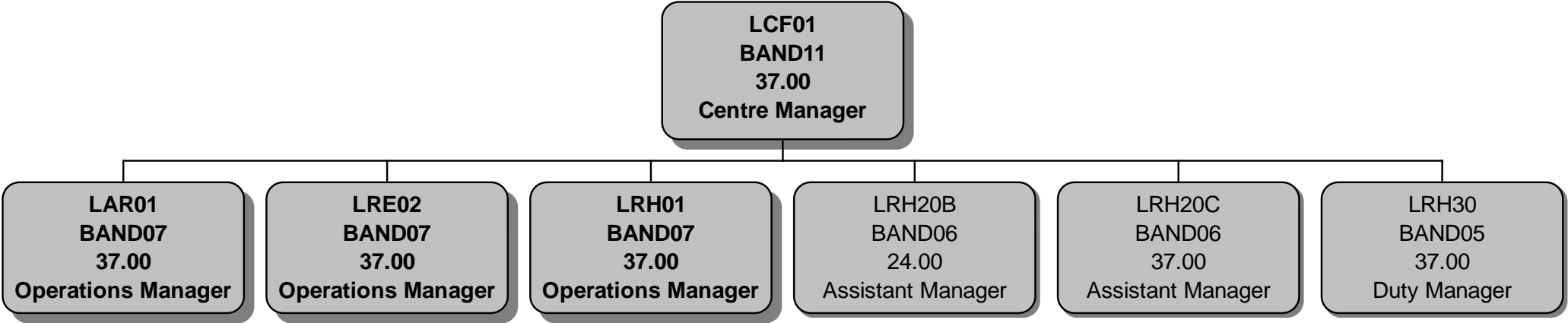
**COM06**  
**BAND11**  
**37.00**  
**Community Partnerships Manager**

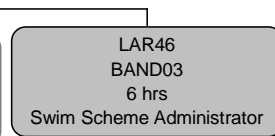
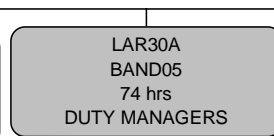
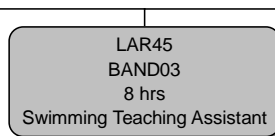
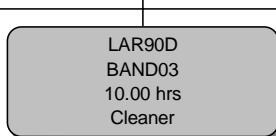
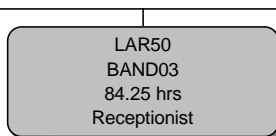
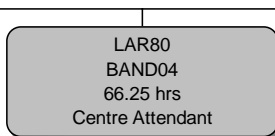
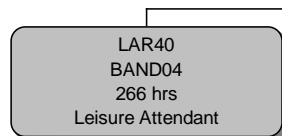
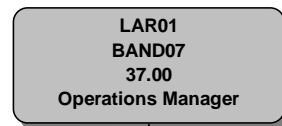
**LCF01**  
**BAND11**  
**37.00**  
**Centre Manager**

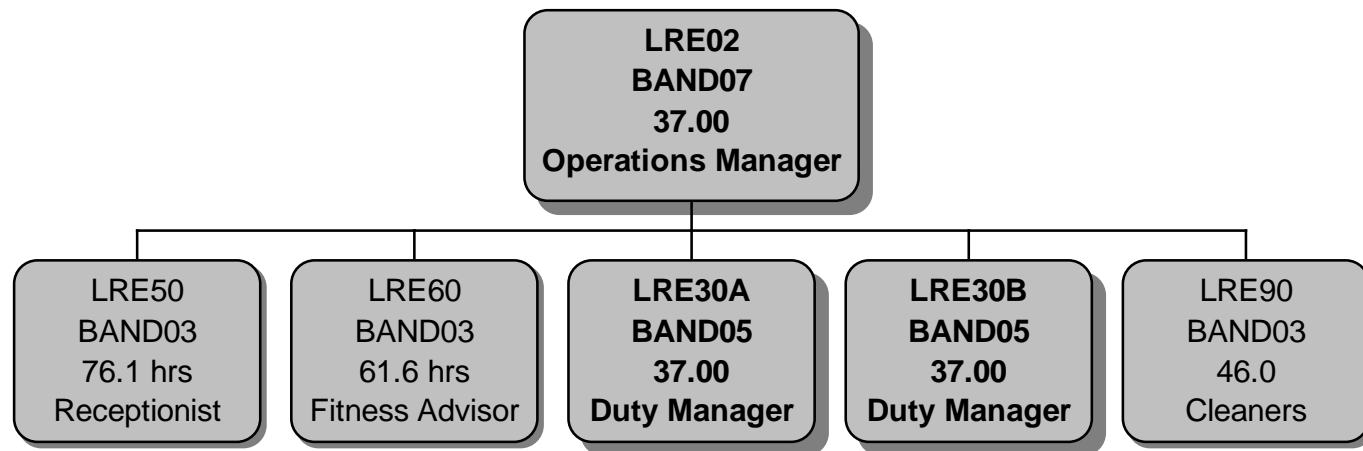
**LFA07**  
**BAND11**  
**37.00**  
**Centre Manager**

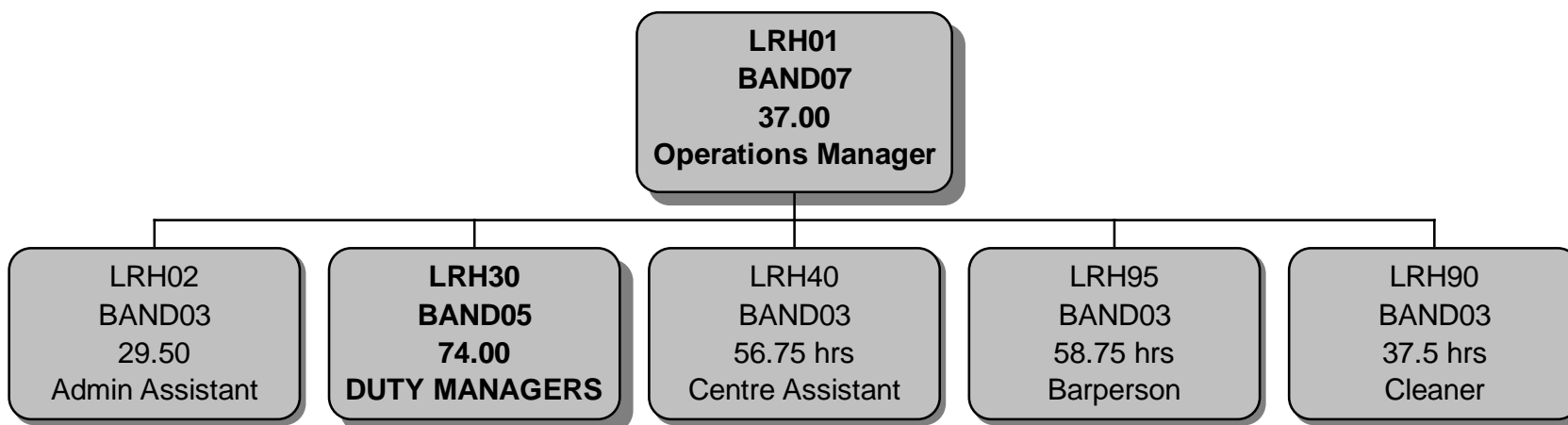




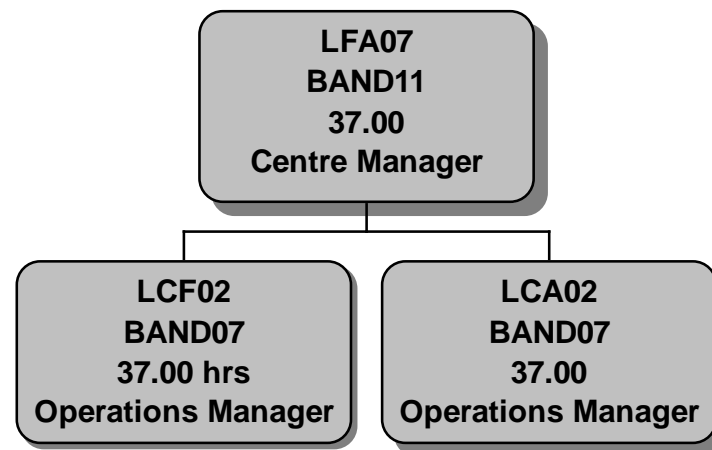












LCF02  
BAND07  
37.00 hrs  
Operations Manager

LCF80  
BAND03  
124.6 hrs  
Centre Attendants

LCF40  
BAND04  
246.75 hrs  
Leisure Attendant

LCF45  
BAND03  
8 hrs  
Swimming Teaching Assistant

LCF30  
BAND05  
74 hrs  
Duty Manager

LCF90  
BAND03  
78 hrs  
Cleaners

LCF20B  
BAND06  
37.00 hrs  
Assistant Manager

LCF46A  
BAND03  
6 hrs  
Swim Scheme Administrator

